

Step-view™ 10kD Marker (un-stained)

| Product | Volume | Cat. No. | Remarks |
|-------------------------------------|--------|----------|-------------------------|
| Step-view™ 10kD Marker (un-stained) | 500 µl | EBM-1015 | 11 recombinant proteins |

- ▶ 10 kDa size increment (easy size estimation)
- ▶ Highly purified and blended 11 recombinant proteins
- ▶ His-tag sequence in the proteins enables detection on western blots by anti-6x His antibody

Description

Elpis Biotech's Step-view™ 10kD protein size marker is a mixture of 11 recombinant purified proteins whose molecular weights are well-adjusted. Step-view™ 10kD protein size marker is available in a ready-to-use formula (no need to boil before use), and is suitable for sizing proteins between 15,000 and 120,000 Da by SDS-PAGE.

Recommended loading volume

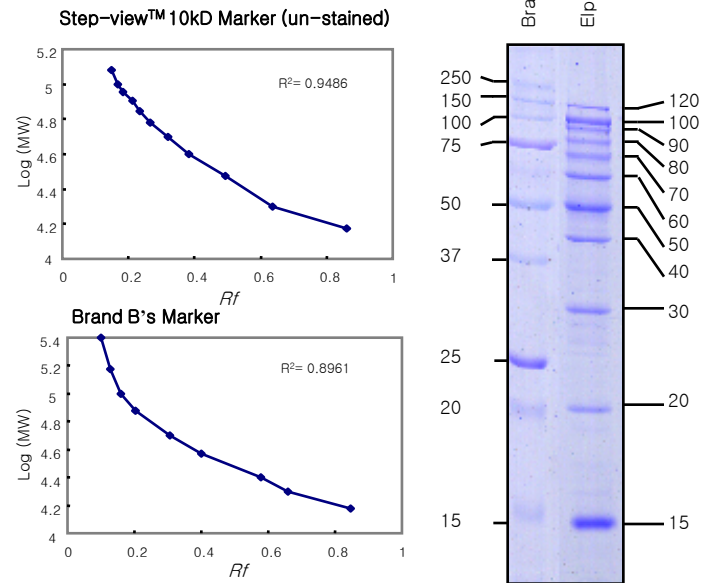
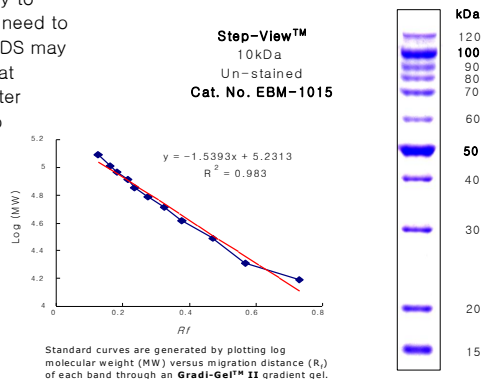
- ◆ 5 µl /lane for a mini-gel (10x8cm², 0.75 mm or 1 mm thick)
- ◆ 10-15 µl /lane for a large-gel (30x20cm², 1 mm or 1.5 mm thick)

Recommended storage condition

- ◆ -20°C for one year
- ◆ Please aliquot in a small volume for prevention of repeated freezing & thawing

Cautions

- ◆ Repeated freezing & thawing, long-term storage and re-use of pipette tip may degrade proteins rapidly
- ◆ These markers are provided as a ready to load format, meaning that there is no need to boil before use. But precipitation of SDS may be occur by long-term storage below at 4°C and you can load markers just after dissolving the precipitant by raising to 50-80°C for a few minutes.



Markers were analyzed on a 12% Hi-Sieve II gradient PAGE gel, and stained with Coomassie Brilliant Blue R250. Gel size : 0.75 mm thick 8 cm long.

NOTE: This typical calibration curve cannot be used to derive laboratory test results. Each laboratory must prepare its own calibration curve.

Related Products

| | | | |
|--|--------|----------|----------------------------------|
| EPD™ Western Reagent | 200ml | EBP-1071 | HRP detection (common use) |
| PicoEPD™ Western Reagent | 200ml | EBP-1073 | HRP detection (highly sensitive) |
| Mid-range Prestained Marker (all blue) | 500 µl | EBM-1014 | 100 applications |

for SDS-PAGE, Buffers, Stains, please visit our home-page : www.elpisbio.com