

Step-View™ 10kD Pre-stained Marker

Product	Volume	Cat. No.	Remarks
Step-view™ 10kD Pre-stained Marker	250 µl (50 applications)	EBM-1016	blue and pink banding during electrophoresis

Description

Elpis Biotech's **Step-view™ 10kD Pre-stained protein size marker** is a dual color pre-stained size marker. It is a mixture of 11 recombinant purified and pre-stained polypeptides whose molecular weights are well-defined and adjusted. **Step-view™ 10kD Pre-stained protein size marker** is available in a ready-to-use formula (no need to boil before use, and ready to load polyacrylamide gel analysis), and is suitable for sizing proteins between 15,000 and 120,000 Da by SDS-PAGE. A blue and pink chromophore is covalently bound to proteins, and 11 pre-stained proteins are visible during electrophoresis or electrophoretic transfer from the gel to a membrane. The 50 and 100 kDa proteins labeled with a pink chromophore enables easy discrimination. The markers are not intended for use in quantitative analysis.

Because coupling of chromophore to the proteins affects their apparent molecular weights in SDS-PAGE relative to unstained proteins, unstained protein standard (Cat. No. EBM-1015) should be used for accuracy >95%.

Recommended loading volume

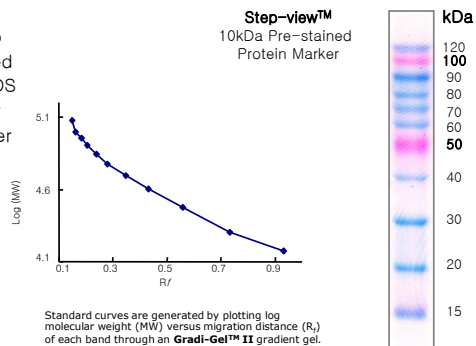
- ◆ 5 µl/lane for a mini-gel (10x8cm, 0.75 mm or 1 mm thick)
- ◆ 10-15 µl/lane for a large-gel (30x20cm, 1 mm or 1.5 mm thick)

Recommended storage condition

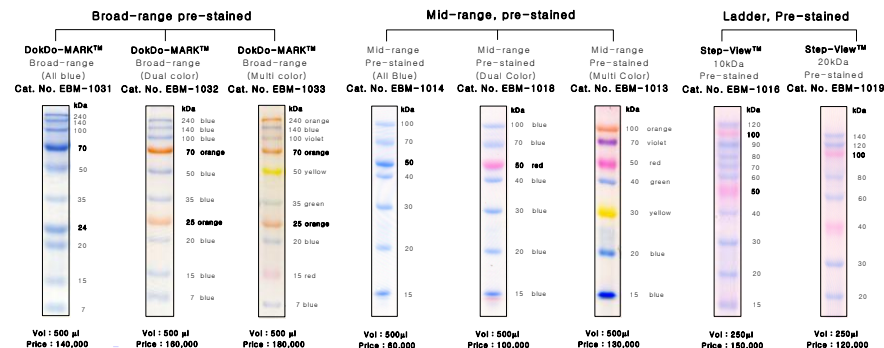
- ◆ -20°C for one year
- ◆ Please aliquot in a small volume for prevention of repeated freezing & thawing

Cautions

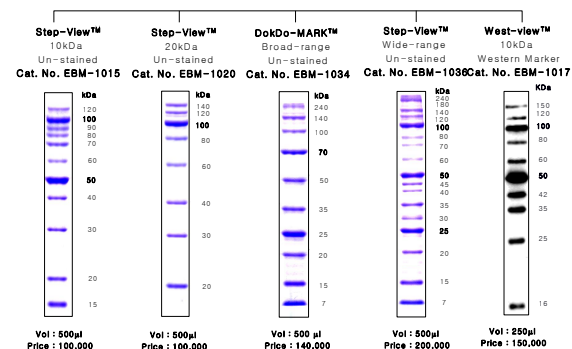
- ◆ Repeated freezing & thawing, long-term storage and re-use of pipette tip may degrade proteins rapidly
- ◆ These markers are provided as a ready to load format, meaning that there is no need to boil before use. But precipitation of SDS may occur by long-term storage below at 4°C and you can load markers just after dissolving the precipitant by raising to 50-80°C for a few minutes.



Pre-stained Protein Markers For Easy and Clear Band Identification



Unstained Protein Ladder Markers For Accurate Molecular Weight Estimation



“Be Happy Always”