

Dokdo-Mark™ Broad-range Protein Markers

Product	Volume	Cat. No.	Remarks
Broad-range Pre-stained Marker (all blue)	500 µl	EBM-1031	all blue labeled marker
Broad-range Pre-stained Marker (dual color)	500 µl	EBM-1032	blue and orange banding during electrophoresis
Broad-range Pre-stained Marker (multi color)	500 µl	EBM-1033	blue, orange, red, violet, yellow and green banding
Broad-range Marker (un-stained)	500 µl	EBM-1034	un-stained marker for exact and sharp banding

Description

Broad-range Protein Markers are useful for SDS-PAGE analysis of your proteins. The each marker is a mixture of 10 recombinant purified proteins whose molecular weights are well-defined. The markers are supplied in a ready-to-use formula (no need to boil before use), and is suitable for sizing proteins between 7,000 and 240,000 Da by SDS-PAGE.

Chromophores are covalently linked to proteins in pre-stained markers, and 10 pre-stained proteins are visible during electrophoresis or electrophoretic transfer from the gel to the membrane. The 25 and 70 kDa proteins play a ruler function for easy identification of banding.

Because coupling of chromophores to the proteins in pre-stained markers affects their apparent molecular weights in SDS-PAGE relative to un-stained proteins, un-stained protein standard (Cat. No. EBM-1034) should be used for accuracy >95%.

Recommended loading volume

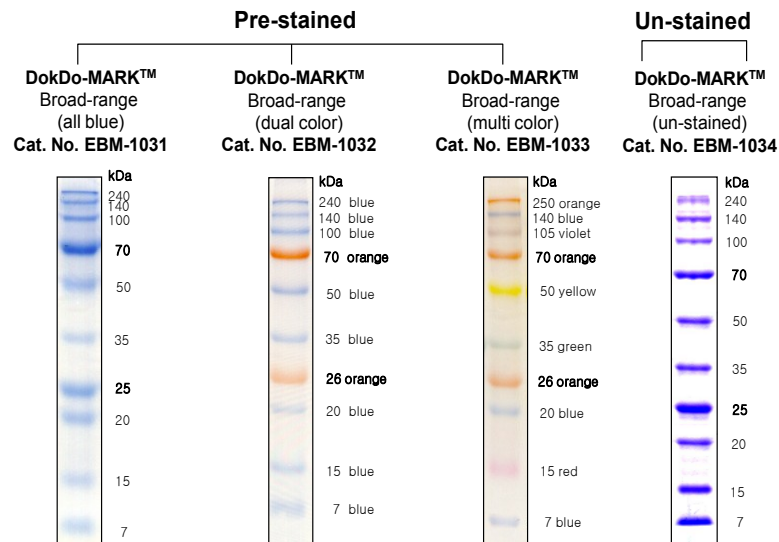
- 5 µl/lane for a mini-gel (10x8 cm², 0.75 mm or 1 mm thick)
- 10-15 µl/lane for a large-gel (30x20 cm², 1 mm or 1.5 mm thick)
- 2-5 µl/lane for a western transfer onto PVDF or NC membranes

Recommended storage condition

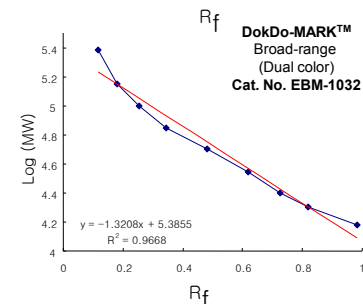
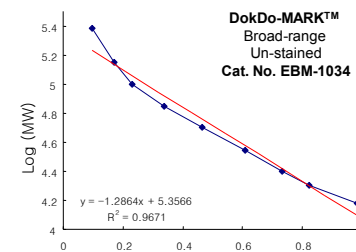
- Store at -20°C for one year
- Please aliquot in a small volume for prevention of repeated freezing & thawing

Cautions

- Repeated freezing & thawing, long-term storage and re-use of pipette tip may degrade proteins rapidly.
- The marker is provided as a ready to load format, meaning that there is no need to boil before use. But precipitation of SDS may occur by long-term storage at below 4°C, and you can load marker just after dissolving the precipitant by raising to 50-80°C for a few minutes.
- The slight size difference can be seen in the course of manufacturing. Please confirm the batch numbers.



Before & After R250 staining



Standard curves are generated by plotting log molecular weight (MW) versus migration distance (R_f) of each band in Dokdo-MARK through an Gradi-Get™ II gradient gel.