



For research use only

ISO9001

Color Plus Pre-stained Marker

| Product | Volume | Cat. No. | Remarks |
|---|-------------------|----------|--|
| Color Plus Pre-stained Marker (Broad-range,dual color) | 500 μl | EBM-1035 | Blue and orange banding during electrophoresis |

Description

Elpis Biotech's Color Plus Pre-stained protein marker is useful for SDS-PAGE analysis of your proteins. The each marker is a mixture of 10 recombinant purified polypeptides whose molecular weights are well-confined. The marker is supplied in a ready-to-use formula (no need to boil before use), and is suitable for sizing proteins between 7,000 and 200,000 Da by SDS-PAGE.

Chromophores are covalently linked to proteins in pre-stained markers, and 10 pre-stained proteins are visible during electrophoresis or electrophoretic transfer from the gel to a membrane. The 72 kDa protein play a ruler function for easy identification of banding.

Because coupling of chromophore to the proteins in pre-stained markers affects their apparent molecular weights in SDS-PAGE relative to un-stained proteins, un-stained protein standard should be used for accuracy >95%.

Recommended loading volume

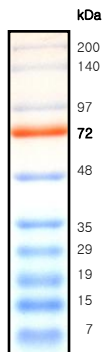
- ◆ 5 μl /lane for a mini-gel (10x8 cm², 0.75 mm or 1 mm thick)
- ◆ 10-15 μl /lane for a large-gel (30x20 cm², 1 mm or 1.5 mm thick)
- ◆ 2 μl /lane for a western transfer onto PVDF or NC membranes

Recommended storage condition

- ◆ -20°C for one year
- ◆ Please aliquot in a small volume for prevention of repeated freezing & thawing

Cautions

- ◆ Repeated freezing & thawing, long-term storage and re-use of pipette tip may degrade proteins rapidly.
- ◆ These markers are provided as a ready to load format, meaning that there is no need to boil before use. But precipitation of SDS may be occur by long-term storage below at 4°C and you can load markers just after dissolving the precipitant by raising to 50-80°C for a few minutes.
- ◆ The slight size difference can be seen in the course of manufacturing. Please confirm the batch numbers.



For research use only

ISO9001

Color Plus Pre-stained Marker

| Product | Volume | Cat. No. | Remarks |
|---|-------------------|----------|--|
| Color Plus Pre-stained Marker (Broad-range,dual color) | 500 μl | EBM-1035 | Blue and orange banding during electrophoresis |

Description

Elpis Biotech's Color Plus Pre-stained protein marker is useful for SDS-PAGE analysis of your proteins. The each marker is a mixture of 10 recombinant purified polypeptides whose molecular weights are well-confined. The marker is supplied in a ready-to-use formula (no need to boil before use), and is suitable for sizing proteins between 7,000 and 200,000 Da by SDS-PAGE.

Chromophores are covalently linked to proteins in pre-stained markers, and 10 pre-stained proteins are visible during electrophoresis or electrophoretic transfer from the gel to a membrane. The 72 kDa protein play a ruler function for easy identification of banding.

Because coupling of chromophore to the proteins in pre-stained markers affects their apparent molecular weights in SDS-PAGE relative to un-stained proteins, un-stained protein standard should be used for accuracy >95%.

Recommended loading volume

- ◆ 5 μl /lane for a mini-gel (10x8 cm², 0.75 mm or 1 mm thick)
- ◆ 10-15 μl /lane for a large-gel (30x20 cm², 1 mm or 1.5 mm thick)
- ◆ 2 μl /lane for a western transfer onto PVDF or NC membranes

Recommended storage condition

- ◆ -20°C for one year
- ◆ Please aliquot in a small volume for prevention of repeated freezing & thawing

Cautions

- ◆ Repeated freezing & thawing, long-term storage and re-use of pipette tip may degrade proteins rapidly.
- ◆ These markers are provided as a ready to load format, meaning that there is no need to boil before use. But precipitation of SDS may be occur by long-term storage below at 4°C and you can load markers just after dissolving the precipitant by raising to 50-80°C for a few minutes.
- ◆ The slight size difference can be seen in the course of manufacturing. Please confirm the batch numbers.

