

## Step-view™ Wide-range Marker (un-stained)

Product	Volume	Cat. No.	Remarks
Step-view™ Wide-range Marker (un-stained)	500 µl	EBM-1036	17 recombinant proteins 5 kDa interval

- ▶ 5 kDa size increment (7 – 240 kDa, easy size estimation)
- ▶ Highly purified and blended 17 recombinant proteins

### Description

Elpis Biotech's **Step-view™** Wide-range marker is a real size marker containing 17 recombinant purified protein whose molecular weights are well-adjusted. **Step-view™** Wide-range marker is available in a ready-to-use formula (no need to boil before use), and is suitable for sizing proteins between 7,000 and 240,000 Da by SDS-PAGE. For easy identification of bands, 25 kDa, 50 kDa, and 100 kDa proteins are added double. **Step-view™** Wide-range marker is useful for determining exact band size (maker function), for easy to remember band sizes (ladder function), and for easy to discriminating the band locations (ruler function).

### Recommended loading volume

- ◆ 5 µl/lane for a mini-gel (10x8cm<sup>2</sup>, 0.75 mm or 1 mm thick)
- ◆ 10–15 µl/lane for a large-gel (30x20cm<sup>2</sup>, 1 mm or 1.5 mm thick)

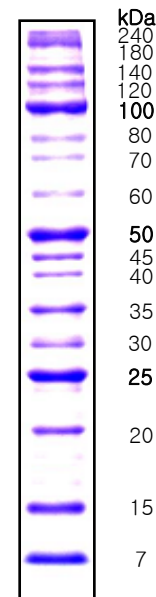
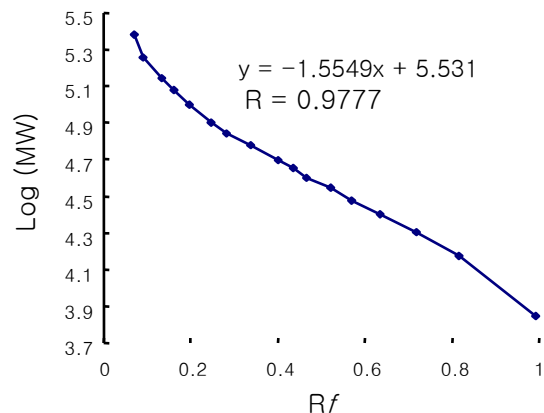
### Recommended storage condition

- ◆ -20°C for one year
- ◆ Please aliquot in a small volume for prevention of repeated freezing & thawing

### Cautions

- ◆ Repeated freezing & thawing, long-term storage and re-use of pipette tip may degrade proteins rapidly
- ◆ These markers are provided as a ready to load format, meaning that there is no need to boil before use. But precipitation of SDS may be occur by long-term storage below at 4°C and you can load markers just after dissolving the precipitant by raising to 50–80°C for a few minutes.

Step-View™  
Wide-range Marker  
(un-stained)  
Cat. No. EBM-1036



Standard curves are generated by plotting log molecular weight (MW) versus migration distance (R<sub>f</sub>) of each band through an **Gradi-Gel™ II** gradient gel.