

West-view™ 2 Western Marker (Broad-range)

Product	Volume	Cat. No.	Remarks
West-view™ 2 Western Marker (Broad-range)	250 μ l (50 applications)	EBM-1037	8 recombinant proteins (16-215 kDa)

Description

West-view™ 2 Western marker (Broad-range) is a brand-new, innovative true protein size marker. You can quickly and easily visualize discrete bands on your western blot only by a simple application of marker with your sample. You can get superior results, without further processing like adding extra reagents as described by many other suppliers.

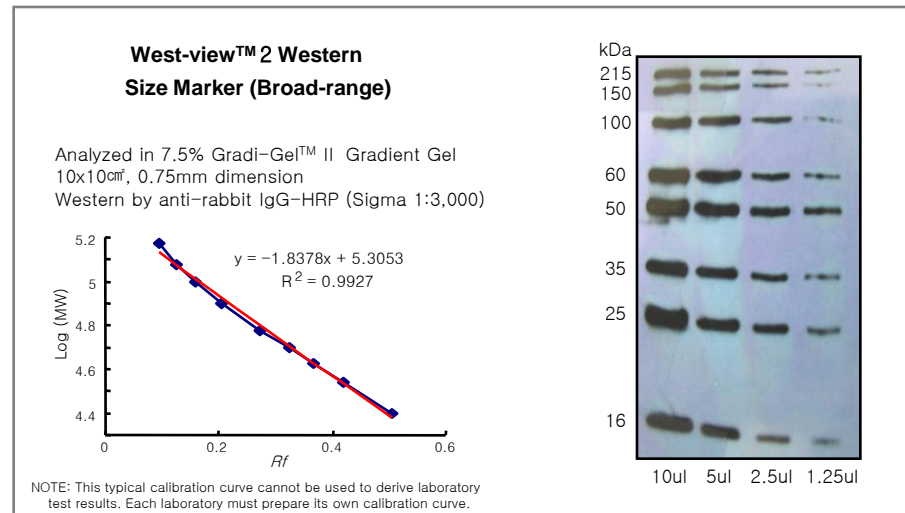
All the highly purified recombinant proteins are designed to bind immunoglobulins with high affinity in a denatured form, thus marker proteins directly bind to primary or secondary antibodies in your western blotting. You can use it in a chemiluminescent or chromogenic detection methods of your choice. It's compatible with most immunodetection methods, including horseradish peroxidase or alkaline phosphatase systems.

You'll get sharp, clear bands and precise, reproducible molecular weight estimation directly on western blot as shown on the figures.

West-view™ 2 Western marker (Broad-range) can also be used for optimizing your western transfer condition, verification of antibody conjugated peroxidase intactness, and controlling the detection system. In case, size dependent uneven band's densities of western size marker in western blotting indicate the inappropriate transfer of your proteins to membrane, and further requires adjusting protein transfer condition. No marker bands in western blot may indicate functional problems in your detection system.

Advantages

- Easy-to-use procedure
- Direct marker visualization on western blots (x-ray film, membranes, or on chemiluminescence imager)
- Accurate protein molecular weight estimation directly on western blots
- Useful for optimizing western transfer, antibody intactness, and detection system



Specifications

Contents : 250 μ l of West-view™ 2 Western marker in a ready-to-use format.
(no need to boil before use).

Storage Buffer : 62.5mM Tris-HCl, pH 6.8, 1% β -mercaptoethanol, 35% glycerol, 1% SDS, and 0.01% bromophenol blue.

Sample Load : 5 μ l of the marker solution is recommended on a 10x8 cm² mini-gel.
Sufficient reagents are provided to perform 50 applications.

Although 5 μ l is the recommended loading volume, you can load 0.01-10 μ l depending on the binding affinity of your antibody species and the sensitivity of your detection system.

Before applying in your samples, you must adjust appropriate loading quantity by serial dilution experiments. Load 5 μ l of serially diluted marker (1x, 1/2x, 1/4x, 1/8x, and so on), and try western detection according to the same procedure as you do. Then determine best fitted loading volume to beautify your data.

Recommended storage condition

- -20°C for one year
- Please aliquot in a small volume for prevention of repeated freezing & thawing

This product is guaranteed for one year from date purchase when properly handled and stored.

User Directions

Before you start

Thaw the product at room temperature, and mix solution by brief vortexing.

Loading & Running

1. The West-view™ 2 Western size marker is provided in a ready-to-use format.
There is no need to heat or reduce the standard prior to loading.
2. Load 5 µl of the West-view™ 2 Western size marker on an appropriate SDS-PAGE gel.
3. Load your samples.
4. Run the samples using the desired buffer system.

Blotting & Detection

1. Transfer the proteins to a blotting membrane as described elsewhere.
2. Perform the blocking, primary antibody incubation, and secondary antibody incubation steps with the blot using a method of choice.
3. Visualize the proteins using a chemiluminescent or colorimetric detection system.
After detection, you should observe ten protein bands of the standard as shown on the previous page.

NOTE : The 100 KDa and 50 Kda bands are more higher in density,
You'll easily distinguish band sizes.

Trouble Shooting

1. Weak or no signals :

- Check your detection system is functional.
- Check western transfer is completed.

2. Highly dense or dispersed signals :

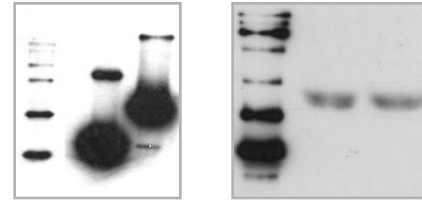
Decrease marker loading volume up to 1/10 to 1/1,000. Dilute with 1x sample buffer.

3. Unusual dense band appeared :

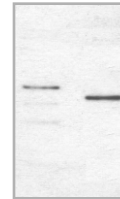
Uneven western transfer due to size difference, check western transfer condition.

Case Studies

1. Uneven transfer, Loading error.

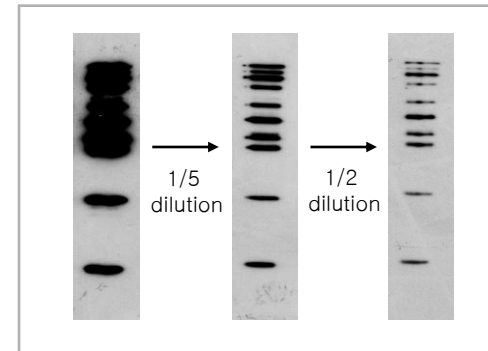


2. Your 2'nd antibody must be not good. Or too diluted marker has been applied.



3. Too high signal, no distinct bands are appeared :

Dilute 1/5 to 1/1,000 with 1x sample buffer. Do not reduce loading volume.



Western Marker Can Beautify Your Precious Data

Always Be Happy